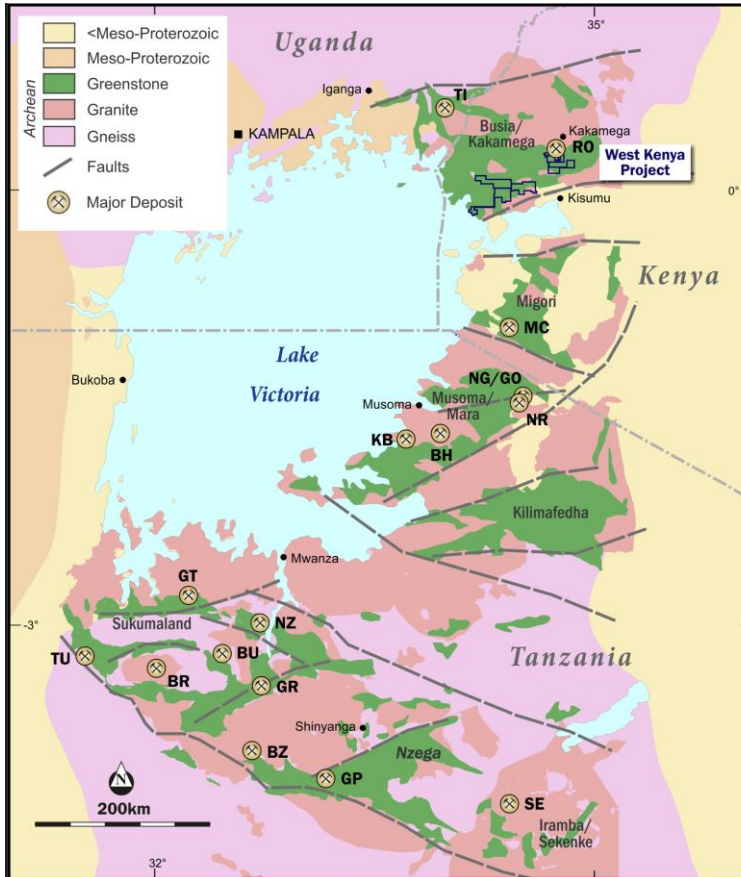
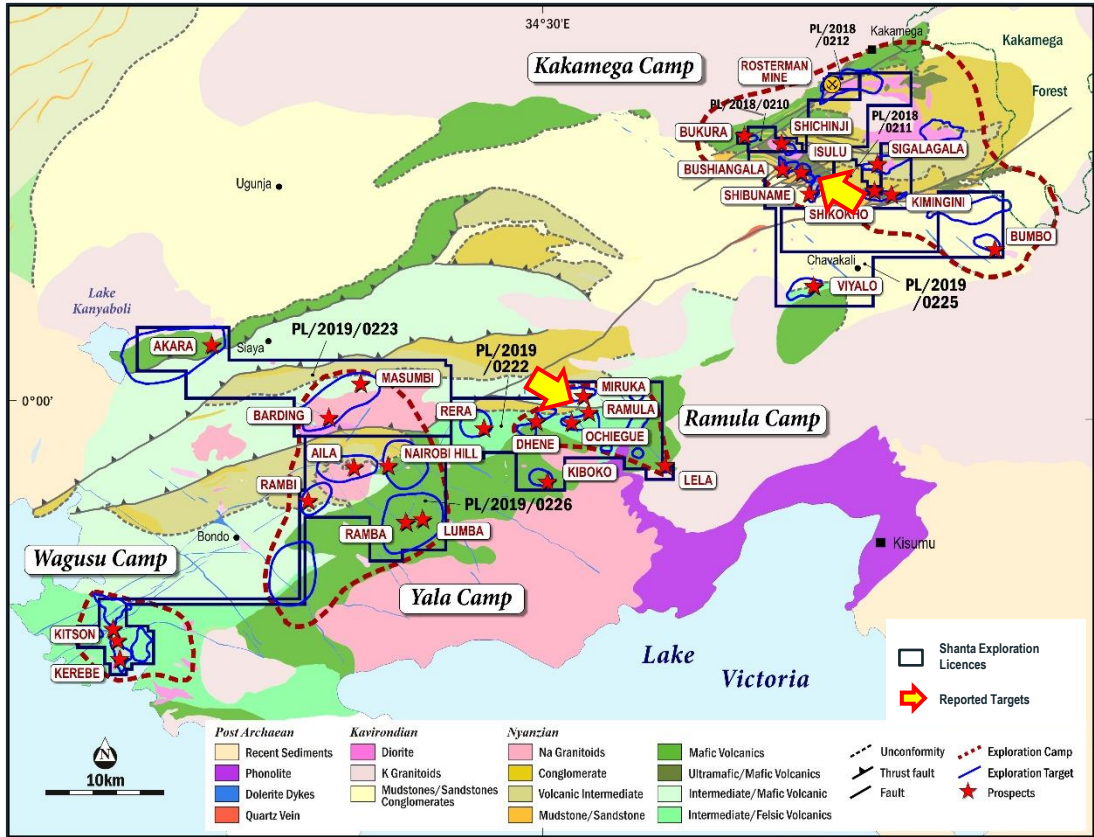


# Lake Victoria Goldfields Geological Map and Location of the West Kenya Project

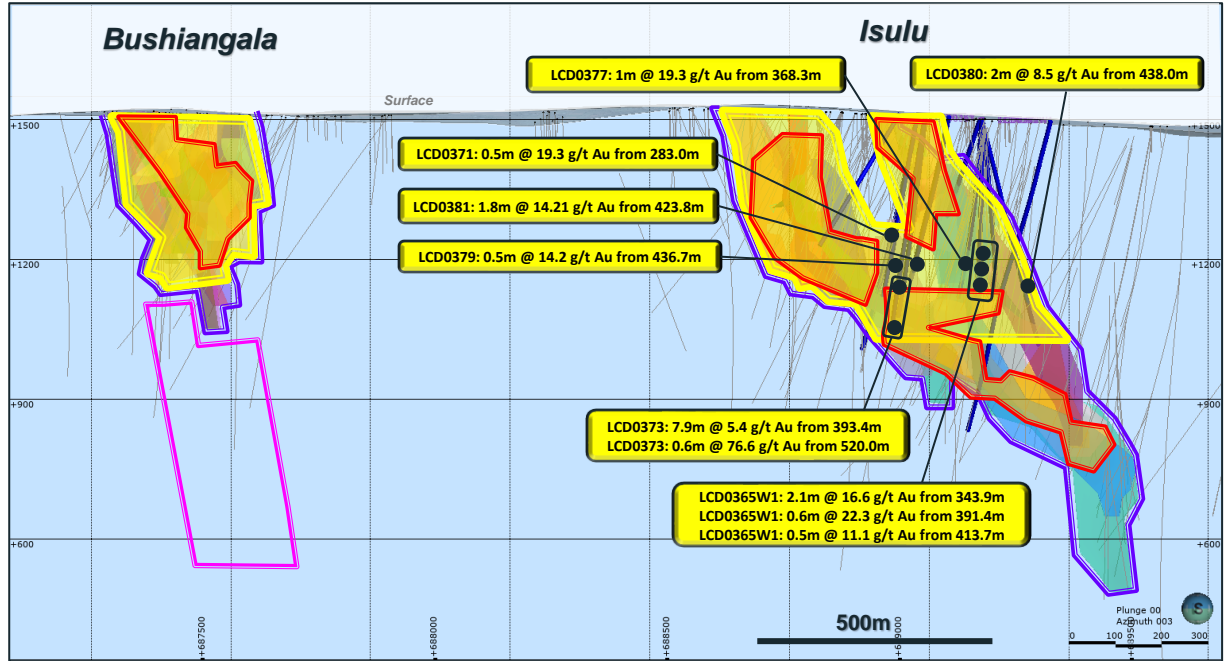


- BR** - Buck Reef
- BH** - Buhemba
- BU** - Bulyanhulu
- BZ** - Buzwagi
- GT** - Geita
- GO** - Gokona
- GP** - Golden Pride
- GR** - Golden Ridge
- KB** - Kiabakari
- MC** - Macalder
- NZ** - Nyanzaga
- NG** - Nyabigena
- NR** - Nyabirama
- RO** - Rosterman
- SE** - Sekenke
- TI** - Tira
- TU** - Tulawaka


# West Kenya Project – Geological Map





# Lake Isulu and Bushiangala – Resource Boundaries and Reported Intercepts – long-section, looking north




## LEGEND

 2018 Inferred resource boundary

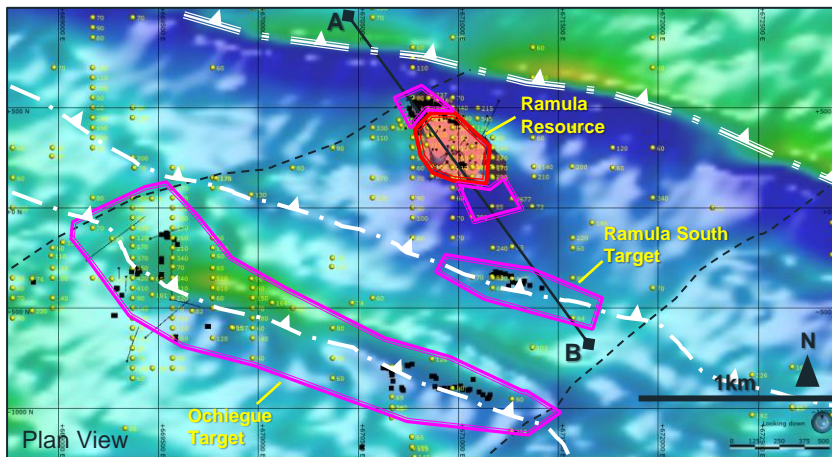
 2022 March Indicated resource boundary

 2022 Year-end Indicated resource boundary









 Reported DD holes and intercepts (highlights)

 Exploration targets

# Ramula Deposit and Proximal Targets on the Magnetics RTP Image and Cross-section A-B



**LEGEND**

-  Regional thrust
-  Camp-scale shallow-dipping structure
-  Steeply-dipping fault
-  Au in soils, > 60ppb
-  Resource extensions area and exploration targets
-  Ramula mineralised zones
-  Reported DD holes and intercepts (highlights)
-  Ramula 2022 Inferred Resource and Q1 2023 Indicated conversion boundary

